

An anchor point to a drifting world!

An initiative by SIOS Remote Sensing Working Group

Webinar#2 of SIOS's webinar series

To provide a social experience to the Svalbard research community in difficult times

This work is licensed under a Creative Commons BY-NC 4.0 International License
(<https://creativecommons.org/licenses/by-nc/4.0/>)

Friday, 24th April, Time: 12:45 to 15:00 Hrs CET
Zoom:

29. april 2020

Navn Etternavn, Svalbard

Shridhar Jawak, Remote Sensing Officer



An anchor point to a drifting world!

Talks:

12:45 - 13:00 Shridhar Jawak (SIOS Remote Sensing Officer)

Welcome, updates from SIOS-KC and introduction to the webinar

13:00 - 13:30 Richard Ashley Morris (NPI):

Remote sensing of Svalbard mass balance, 2011-2017

13:30 - 14:00 Hannah Ming Siu Vickers (NORCE):

A 20-Year MODIS-Based Snow Cover Dataset for Svalbard and Its Link to Phenological Timing and Sea Ice Variability

14:00 - 14:30 Lukasz Stachnik (University of Wroclaw):

Carbon cycle in a perspective of glacier recession - marine or terrestrial control?



An anchor point to a drifting world!

14:30 - 15:00 Panel discussion: "SIOS data management"

Moderator: Dariusz Ignatiuk (SIOS Science Integration & Data Officer)

Panel: Øystein Godøy, Stein Tronstad, Angelo Viola

Discussion topics:

- What benefits can scientists have from open data policy?
- How to motivate the scientists to share data?
- What are the concerns and obstacles to make data free and open?
- How to better link researchers with data managers?
- How does SDMS contribute to the open science and data sharing?



SIOS-KC Headquarters

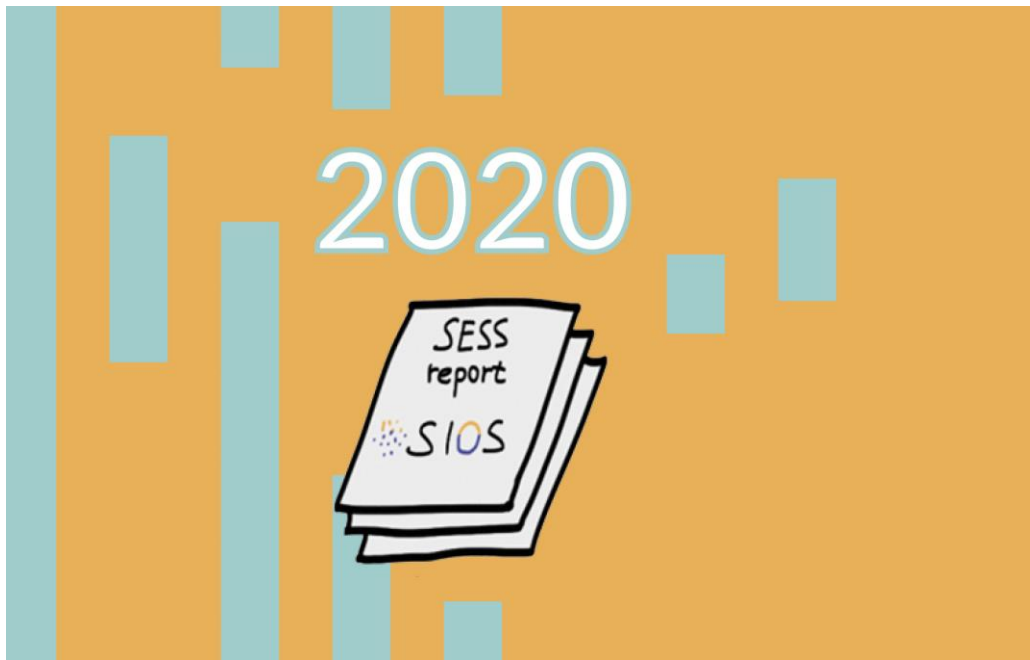


Corona information for Svalbard

You can find information about regulations related to the corona virus and Svalbard here:

- The Governor of Svalbard: <https://www.sysselmannen.no/en/corona-and-svalbard/>
 - Facebook: <https://www.facebook.com/SysselmannenSvalbard/>
- The local government (Longyearbyen lokalstyre): <https://www.lokalstyre.no/koronavirus.525097.no.html>
 - Facebook: <https://www.facebook.com/Longyearbyen-lokalstyre-378676012292605/>
- Kingsbay: <https://kingsbay.no/>
 - Facebook: <https://www.facebook.com/KingsBayAs/posts/568160970712962>
- Hornsund: <https://hornsund.igf.edu.pl/information-on-suspension-of-access-to-the-hornsund-polish-polar-station/>
- General information from the Norwegian Institute for Public Health: <https://www.fhi.no/en/op/novel-coronavirus-facts-advice/facts-and-general-advice/advice-and-information-to-public/>

Status of SESS report 2020



- Deadline for proposals: 15 April 2020
 - **12 proposals** for contributions received
 - Funding decision due in beginning of May
 - Full in-kind contributions that follow the eligibility criteria can still be proposed
-
- **Release of SESS report 2020: January 2021**

Evaluation of INFRASTRUKTUR programme - SIOS user survey



The Research Council of Norway is carrying out an evaluation of their infrastructure programme. As part of this, SIOS is conducting a user survey.

If you used any of the SIOS services during **2019**, please complete the survey! Go to https://sios-svalbard.org/user_survey2020#

Logistics Notice Board



Why? to make research activities more efficient economically, environmentally and in terms of researcher time and effort.

- Do you have an extra seat on your helicopter or spare capacity on your research cruise? Are you in need of samples all over Svalbard? Has your sonde landed on Edgeøya?

This tool may also be useful for connecting those that are able to carry out work in Svalbard and those that have work that they are not able to do.

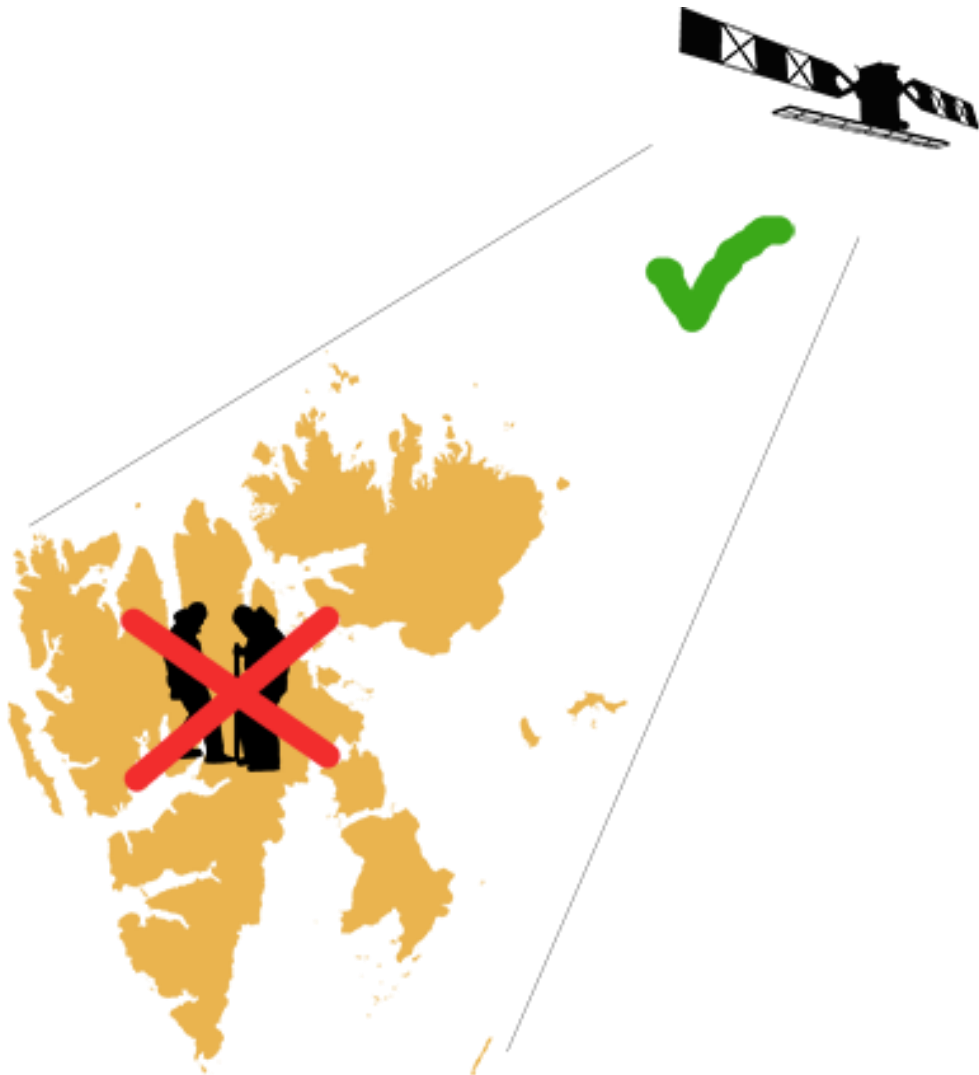
SIOS-KC to the rescue!

- SIOS-KC can help to find local manpower during the travel bans
- Submit a request to the logistics notice board and we will assess if we are able to help!



Photo: Ward van Pelt

Patch up your field data gaps with remote sensing



Most of our members had to cancel planned field campaigns to Svalbard in March and April 2020.

Developments in travel restrictions in coming months are unclear and we are expecting more cancellations of field campaigns this year leading to further gaps in observations.

Some of these data gaps can be filled with remote sensing observations.

Mapping the needs of researchers and evaluate the possibilities to provide remote sensing observations in the absence of field campaigns in Svalbard.

If you think that remote sensing data may be used to fill your data gaps, please fill in the webform

Announcement of Opportunity (AO) in Airborne Remote Sensing



Timeline of the call

- **Deadline to submit proposal:** 20 April 2020
- **Decision:** Expected by Mid-May
- **Image/data acquisition period:** 20 May - 15 September (Spring-Summer)

Available funding

1 MNOK

- approximate 25 flight hours using the Dornier aircraft
- approximate 50 flight hours using drones



Received 11 proposals in this call

Terrestrial Remote Sensing Training Course in Svalbard

- **Time:** 31 August - 4 September 2020* (starting Monday morning, ending Friday at lunch time, depending on flights)
- **Location:** Longyearbyen, Svalbard
- **Duration:** 4-5 Days
- **Application deadline:** 7 May

Target audience

Anyone from terrestrial field scientists, Ph.D. students, researchers and technicians with limited or incomplete knowledge of remote sensing techniques.

Goal of the training

The goal of the course is to teach participants the basic skills needed to work independently to acquire, analyse and visualize terrestrial data sets derived from a variety of close to very long-range sources.



Image courtesy: NASA

Terrestrial Remote Sensing Training Course in Svalbard

The training course will include lectures and hands-on sessions focusing on:

- Overview of the range of methods included in the term remote sensing
 - Different sensor types (optical, multispectral, thermal, RADAR, LiDAR, etc.)
 - Different platform types including handheld/ground (e.g. time-lapse camera, airborne (drone, planes), and satellites
- Overview of available free open-source satellite data (Copernicus satellite and other) and tools that can be used for remote sensing in terrestrial environments of Svalbard
- Examples of applications on glaciers, permafrost processes, snow modelling, terrestrial biology, wildlife monitoring, and more.
- Special sessions on terrestrial applications of hyperspectral remote sensing and drones
- Satellite cal/val activities using in situ measurements
- Field excursion using drones, terrestrial laser scanner and ground based InfraNor sensors

Terrestrial Remote Sensing Training Course in Svalbard

Application procedure and tentative timeline

First round: Open to participants from SIOS member institutes

- Application opens 7 April 2020
- First round closes 7 May 2020
- Decision: mid-May

Second round: Open for participants from other institutes
(Subject to available places)

- Second round opens 7 May
- Second round closes 30 May
- Decision: mid-June

Confirmed teachers (will be updated)

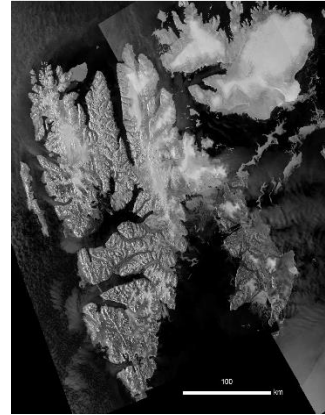
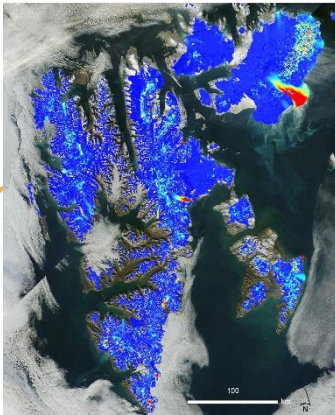
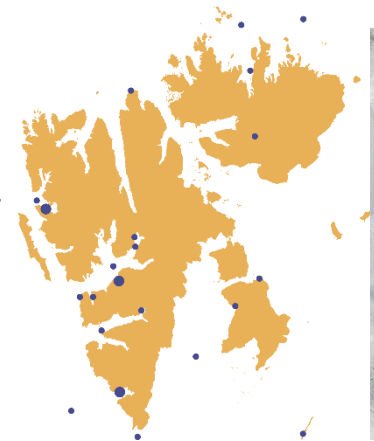
- Hans Tømmervik, NINA
- Roberto Salzano, CNR
- Lars Eklundh, Lund University
- Luc Girod, University of Oslo
- Richard Hann, UNIS/NTNU
- Agnar Sivertsen, NORCE
- Holt Hancock, UNIS
- Tom Rune Lauknes, NORCE



Image courtesy: NASA



Earth Observation (EO), Remote Sensing (RS), and Geoinformation (GI) Applications in Svalbard



Special Issue Editors:

Dr. Shridhar D. Jawak

Prof. Dr. Andreas Kääb

Dr. Geir Moholdt

Dr. Malgorzata Blaszczyk

Ms. Ann Mari Fjæraa

Dr. Roberto Salzano

Prof. Dr. Veijo Pohjola

Prof. Hiroyuki Enomoto

Dr. Kjell Arild Høgda

Dr. Bo N. Andersen

Dr. Bartłomiej Luks

Dr. Frode Dinessen

Special Discount on Article Processing Charge (APC)

50% discount for manuscripts

- from guest editors;
- from SIOS activities, e.g. [InfraNor](#), [SESS report](#), and [SIOS Access Projects](#).

30% discount for manuscripts

- invited by guest editors;
- submitted by authors from SIOS member institutes
- submitted by any PhD student as a first or corresponding author

This *Special Issue* will provide a broad platform to various regional and Svalbard-wide studies that are being conducted using EO/RS/GI.

We especially encourage contributors to provide access of data and products generated as a part of study via the SIOS data management system (SDMS).

Special issue to facilitate publications in remote sensing

- Attract relevant contributions from the whole Svalbard science community
- Projects funded by SIOS-ACCESS programme, SIOS-InfraNor, and chapters from SIOS-SESS report
- EO/RS/GI techniques relevant for field campaigns, modelling, and long-term monitoring programs
- cal/val activities for satellite missions that are being conducted in Svalbard e.g. Pandora installation in Ny Ålesund, cal/val of snow parameters from satellite, cal/val activities using moorings and many more

Open Access Article

A 20-Year MODIS-Based Snow Cover Dataset for Svalbard and Its Link to Phenological Timing and Sea Ice Variability

by  Hannah Vickers *   Stein Rune Karlsen  and  Eirik Malnes 

NORCE Norwegian Research Centre AS, P.O. Box 6434, 9294 Tromsø, Norway

* Author to whom correspondence should be addressed.

Remote Sens. 2020, 12(7), 1123; <https://doi.org/10.3390/rs12071123>

Received: 4 March 2020 / Revised: 27 March 2020 / Accepted: 31 March 2020 / Published: 1 April 2020

(This article belongs to the Special Issue Earth Observation (EO), Remote Sensing (RS), and Geoinformation (GI) Applications in Svalbard)

View Full-Text

Download PDF

Browse Figures

Cite This Paper



More Information: <https://sios-svalbard.org/SpecialIssueRemoteSensing>



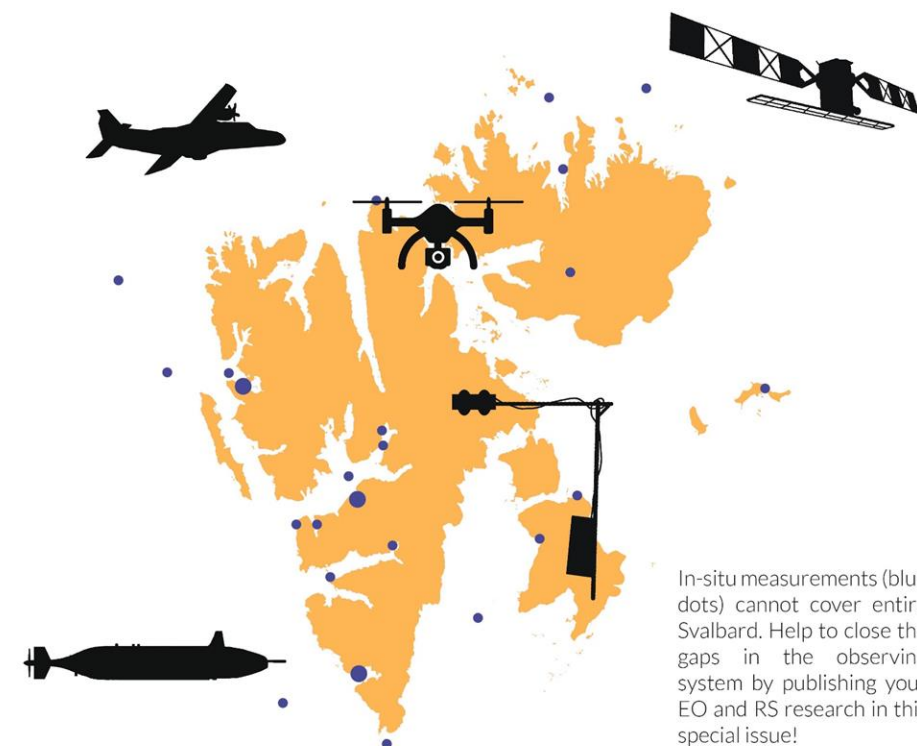
remote sensing



SIOS's special issue on
Earth Observation (EO), Remote Sensing (RS) and Geoinformation (GI)
applications in Svalbard

Open for submission!
1 March 2020 - 31 December 2021

Up to 50% discount for
SIOS related manuscripts!



Check our website for details:

www.sios-svalbard.org/SpecialIssueRemoteSensing



SIOS's Online Conference

Earth Observation, Remote Sensing and Geoinformation applications in Svalbard

When? 4-5 June 2020

Why?

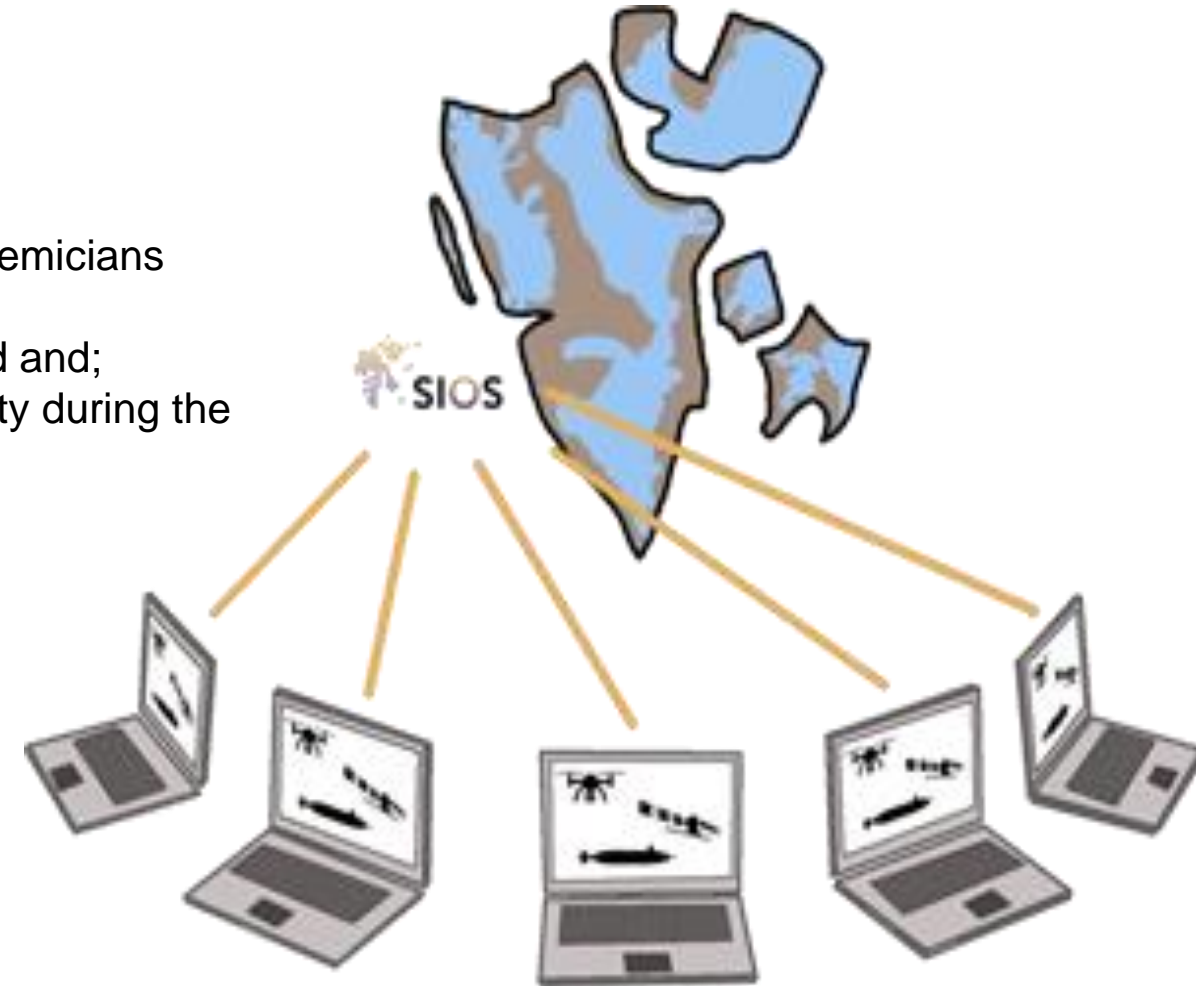
- to promote the PhD students, postdocs, researchers, and academicians to contribute in the **SIOS's special issue on EO/RS/GI**.
- to review the state-of-the-art EO/RS/GI applications in Svalbard and;
- to provide social experience to the Svalbard scientific community during the difficult time.

Awards for Early Career Researchers:

Top 5 papers presented by ECRs (Masters, PhD, postdocs, within 7 years after PhD)

SIOS will fully cover the Article Processing Charge (APC) cost for these top 5 papers

Deadline to submit abstracts: 24 May 2020



Please post your Name and affiliation in Zoom chatbox so we know our audience

A group picture for SIOS Newsletter, social media!

Slido Survey

How to Participate?

Go to: Sli.do on your smart phone/computer

Insert the event code: **# SIOSWEB**

Respond to questions