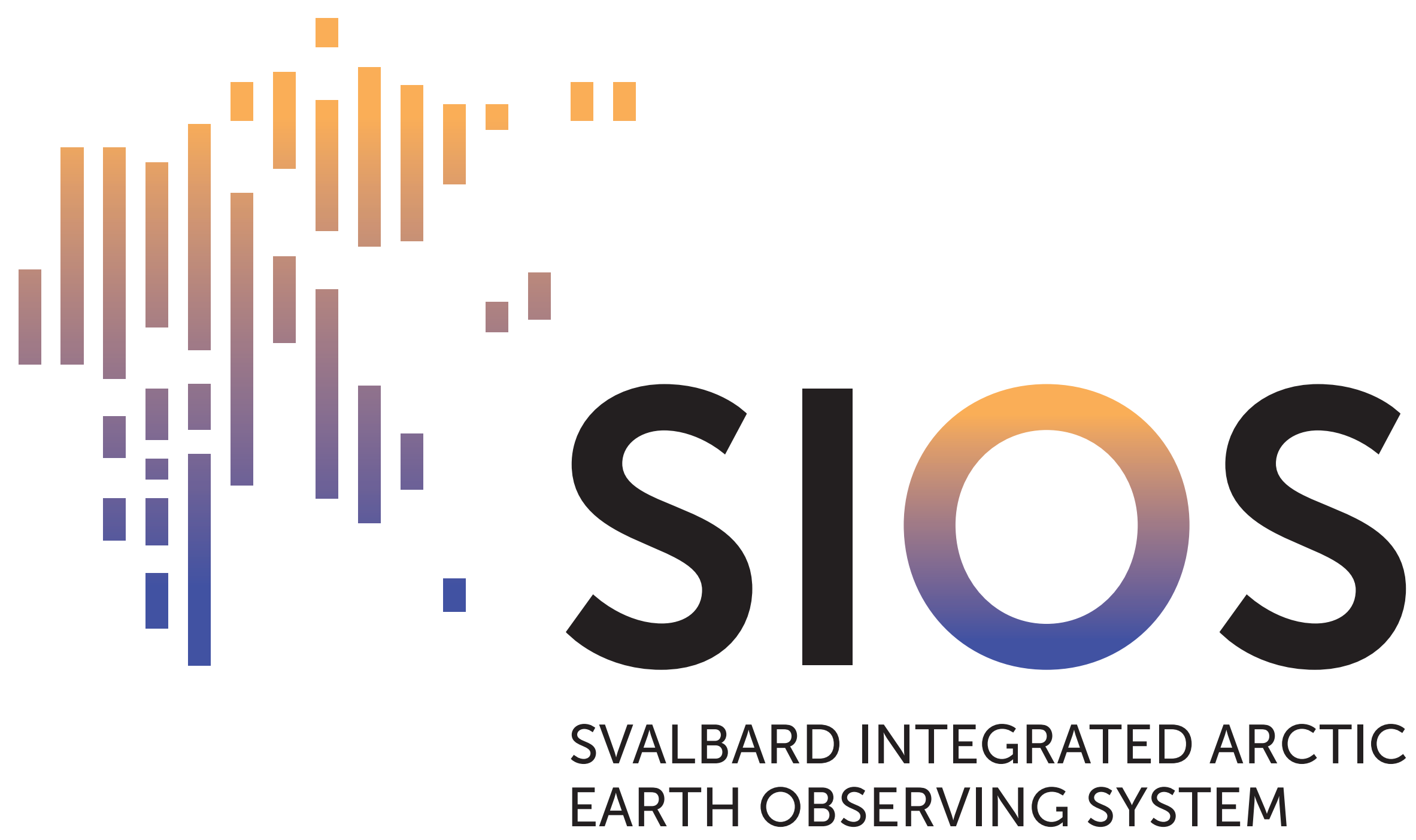


An international research infrastructure for Earth System Science



SIOS builds on an extensive network of existing distributed RI and long-term data series in and around Svalbard.

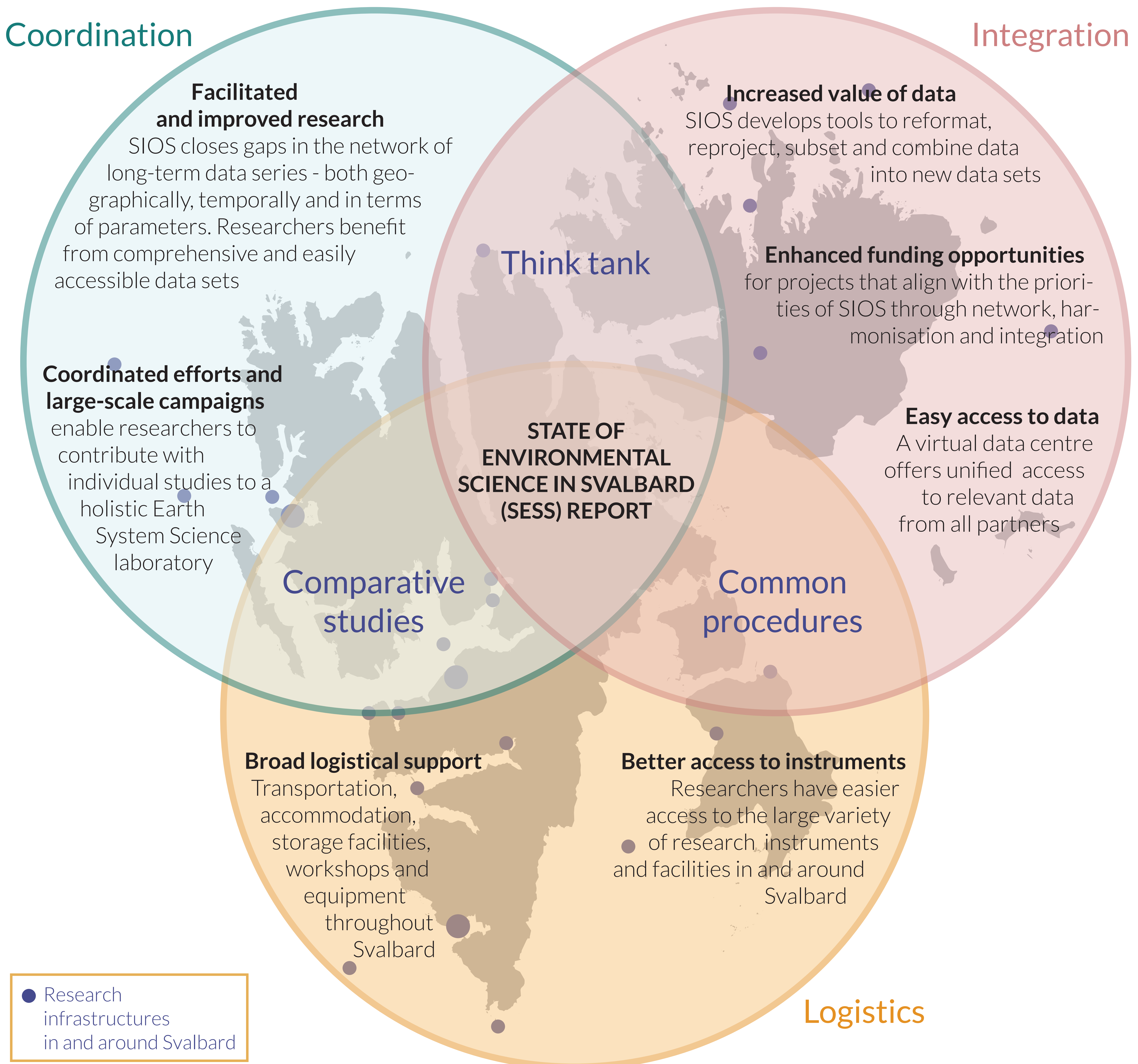
Focuses on processes within and interactions between the different spheres in Earth System Science.

Produces systematic observations which are stable over time, yet dynamic as new methods and questions from society arise.

The Knowledge Centre in Longyearbyen coordinates data management, RI access, remote sensing resources, training programmes etc.

Coordination

Integration



SIOS is managed by a consortium of international institutions with research infrastructure (RI) in and around Svalbard